

*Family, Fun and Adventure Tour*



*14 Days - North and South Island*

*Absolute*  
NEW ZEALAND

# *Outline Itinerary*

## Day 1

Arrive Auckland  
Auckland Harbour Cruise  
Accommodation: Quay West Suites

## Day 2

Auckland's Top 14 Attractions Hop on Hop Off Bus  
Accommodation: Quay West Suites

## Day 3

Drive to Waitomo Caves - Spellbound Tour  
Accommodation: Woodlyn Park

## Day 4

Drive to Rotorua  
Zorb Experience & Agronome Leisure Park  
Maori Evening Cultural Experience  
Accommodation: Novotel Lakeside

## Day 5

Gondola Ride & Luge  
Polynesian Thermal Spa  
Accommodation: Novotel Lakeside

## Day 6

Flight to Blenheim  
Whale Watching Cruise at Kaikoura  
Accommodation: Hapuku Lodge & Tree Houses

## Day 7

Hanmer Springs Alpine Thermal Resort  
Then Drive to Christchurch  
Accommodation: Hotel So

## Day 8

International Antarctic Centre  
Punting on River Avon  
Accommodation: Hotel So

## Day 9

Drive to Akaroa  
Cruise and Swim with Hector Dolphins  
Accommodation: Akaroa Cottages

## Day 10

Drive to Lake Tekapo  
Lake Tekapo Alpine Springs & Spa  
Stargazing Tour  
Accommodation: Alpine Vista B&B

## Day 11

Boat Trip on Tasman Glacier Lake  
Drive to Wanaka  
Accommodation: Oakridge Resort

## Day 12

Puzzling World Wanaka  
Drive to Queenstown  
Accommodation: Heritage Queenstown Hotel

## Day 13

Family Adventure Rafting  
Accommodation: Heritage Queenstown Hotel

## Day 14

Fly Home or Extend your Trip

*Featuring*

## Quay West Suites - Auckland

Quay West Suites Auckland is an exclusive, luxury apartment hotel, ideally located in the very heart of Auckland city, just a stroll away from vibrant restaurants, harbour cruises and fabulous shopping.

It features 52 beautifully appointed one, two and three bedroom apartments all with harbour or city views and full services. High sturdy glass balustrades allow plenty of natural light to flow into each apartment and enable families with young children to feel safe whilst framing the views.

Garden furniture seating allows guests to enjoy room service on their private balcony - a sumptuous breakfast as the sunrises or perhaps a local New Zealand wine as the day draws to a close. Facilities include: Daily housekeeping, undercover secured car parking, indoor heated pool, spa & sauna and a fully equipped air conditioned gymnasium.



## Woodlyn Park - Waitomo

Experience an exceptional farm stay motel near Waitomo Caves, the most unique Waikato Accommodation available.

The World renowned Waitomo Motels include a Train motel, a Plane Motel and the Hobbit Motels. All of the units at Woodlyn Park are beautifully furnished self-contained and situated in the Central North Island, only 2 hours from Auckland, Rotorua and Taupo and just 2 minutes from Waitomo Caves, they are a "must stay" for your New Zealand accommodation.

Woodlyn Park is in the middle of a working farm and also has New Zealand's first Kiwi Culture Show using the audience to bring our history and heritage alive on stage in the most hilarious show you will ever see.



*Featuring*

## Novotel Lakeside - Rotorua

Novotel Rotorua Lakeside is a 4.5 star property located on the picturesque shores of Lake Rotorua and set in park surroundings. The hotel is situated only minutes from the city centre, cafés, restaurants, and major tourist attractions.

Enjoy 'The Royal Suite' which is absolute luxury - this room has two floors with the lower level featuring a lounge area with a flat screen television and a 12-seater dining table. The upper level has 2 bedrooms, one with a super king bed and the other with the option of a super king or two single beds. A flat screen television in each room, 2 bathrooms, a second lounge, study, large geothermal spa, and a spectacular view of Lake Rotorua are features of the second level.

Relax at the end of the day in the contemporary designed Spa; the perfect retreat from the outside world with treatment facilities, a heated pool, and separate mineral pools - its simply divine!



## Hapuku Lodge & Tree Houses - Kaikoura

Sleep in the canopy of Hapuku Lodge's native manuka grove. Rising over 9 metres above the ground, the Tree Houses enjoy views of the Pacific coastline, Kaikoura Seaward Mountain ranges, surrounding deer farm and olive orchard.

Designed by Tony and Peter Wilson, the Tree Houses are a compliment to the spectacular surrounding environment. A unique accommodation experience of sleeping amongst the branches is matched with the luxury of the custom-crafted and ultra-comfy king bed, large spa bath and efficient Danish log-burning fireplaces. Wide-screen televisions, Bose and Ipod stereo systems, rain-fountain showers and heated floors complete the high-level (excuse the pun!) of guest comfort.

With stunning mountain and sea views, the individual TreeHouses are named after the native birds which have quickly adjusted to their new neighbours in the trees. Each Tree House includes a large spa bath, fireplace, rain-fountain shower; unique handcrafted furnishings and the Lodge's great sleeping king beds.



*Featuring*

## Hotel So - Christchurch

Hotel SO is an innovative Christchurch hotel. Located a few minutes walk to Cathedral Square, Botanic gardens, the Christchurch Art Gallery and many of Christchurch's unique and interesting attractions.

Each room is architecturally designed to provide a premium level of comfort and function with fresh funky colours. The rooms are smaller than normal however each room has free wireless broadband, flat screen entertainment system, MP3/iPod plug-in and controllable mood lighting.

Facilities include a gym, sauna, guest lounge and balcony, computer facilities and laundry. Not to forget 'What Bar', the cafe/bar that offers appetising food for breakfast, lunch and dinner, as well as delicious drinks late into the evening.



## Akaroa Cottages - Akaroa

Nestled in New Zealand native bush overlooking Akaroa, Akaroa Cottages offer one of the most private and serene holiday retreats.

Set on 12 acres of private bush land, and only a 10 minute walk into the historic French settlement this is the perfect base to explore the area.

Families can enjoy a spacious two or three bedroom Cottage - with a super king bedroom opening onto the patio and two single beds in the 2nd or 3rd bedroom. Along with a well equipped kitchenette and living area that opens onto a patio.

You can relax on the tables and chairs whilst cooking a dinner 'kiwi BBQ style' and make the most of the expansive harbour and countryside views.



*Featuring*

## Alpine Vista B&B - Lake Tekapo

Lake Tekapo Alpine Vista Bed & Breakfast is located in Lake Tekapo and has panoramic views of the Southern Alps, Lake Tekapo, Mt John and the Two Thumbs Range.

This modern Bed and Breakfast has a high standard of accommodation. The décor and colours used throughout the house reflect those that can be seen in the expansive landscape.

Join the hosts each evening from 5.30pm until 6.30pm for a pre-dinner drink. This gives you an opportunity to meet other guests who are staying in the house before heading out to one of the fine restaurants Lake Tekapo has to offer.

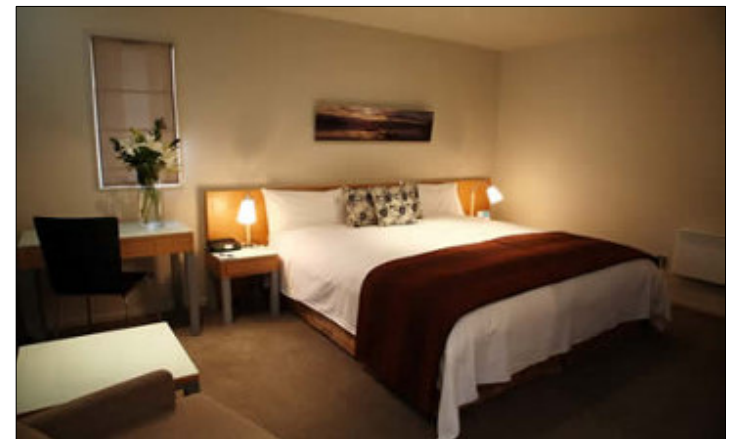


## Oakridge Resort - Wanaka

Oakridge Resort Lake Wanaka is a 4 1/2 star hotel set in a stunning mountain landscape offering majestic views overlooking the Southern Alps.

The resort features fabulous heated rock pools; just imagine after a hard day exploring coming back to a massage or simply to soak in the heated pools exquisitely landscaped in rock and alpine tussock. You will have the choice of one of the many intimate hot spots all on differing levels or swim in the main rock pools and enjoy family fun with the children.

Other facilities include a 25 m lap pool, gymnasium, sauna, the Sanctuary Day Spa and two restaurants, one 'The Poolhouse' is perfect for families, located poolside incorporating a combination of tapas and stylish cuisine to suit every palate.



*Featuring*

## Heritage Hotel - Queenstown

Queenstown, New Zealand's mountain playground, is now compared with the great alpine accommodation of the world and is home to the sumptuous Heritage Queenstown Hotel.

This is a resort that will simply leave you breathless. At Heritage Queenstown you could be forgiven for thinking you were in a postcard.

Soak in the amazing view of the towering Remarkables mountain range rising from the rippled waters of Lake Wakatipu from your choice of room, suite or three-bedroom villa.



# Family, Fun and Adventure Itinerary

## Day 1

Kia Ora - Welcome to Auckland "The City of Sails"

### AUCKLAND HARBOUR CRUISE

ACCOMMODATION  
Quay West Suites  
2 Bedroom Corner Suite

Imagine an urban environment where everyone lives within half an hour of beautiful beaches, hiking trails and a dozen enchanted holiday islands. Add a mild climate, a background rhythm of Polynesian culture and a passion for outstanding food, wine and shopping and you're beginning to get the picture of Auckland, also known as the City of Sails.

Settle into your suite at Quay West Suites; a luxury apartment hotel, ideally located in the very heart of Auckland city.

Whether it is the height of summer or a crisp winter's day, Auckland's sparkling Waitemata Harbour is a thing of beauty. Take an afternoon or evening cruise which includes going under the Auckland Harbour Bridge and into Westhaven Marina for a glimpse of super yachts and the bustling viaduct.



## Day 2

Auckland's Top 14 Attractions Tour

### AUCKLAND'S TOP 14 ATTRactions TOUR HOP ON HOP OFF BUS

ACCOMMODATION  
Quay West Suites  
2 Bedroom Corner Suite

MEALS  
Full Breakfast

A hop on hop off sightseeing tour with full commentary visiting Auckland's big 14 attractions, activities and shopping areas.

The buses depart every 30 minutes in summer. Entrance fees are not included in the price as you choose where and when you want to get off the bus.

The tour lasts as long as you do - take an hour to sightsee or a whole day to visit all the attractions. Visit Mt Eden, Kelly Tarlton's Underwater World, the Rose Park Gardens, Auckland Museum, Parnell Village, Auckland Zoo and the Sky Tower. This is a fabulous way to explore the city and its surrounds.



## Day 3

### Waitomo Glow Worm Caves

#### DRIVE TO WAITOMO

#### SPELLBOUND TOUR

#### ACCOMMODATION

Woodlyn Park  
Hobbit Hole

#### MEALS

Full Breakfast

Drive south to the fertile plains of the Waikato, the route passes through some of the North Island's most important cultural locations - particularly the sacred Maori burial ground of Taupiri Mountain, and Turangawaewae Marae - home of the Maori King. Pass by Hamilton and if surfing is your interest drive via Raglan; world famous for its left hand break.

Continue onto Waitomo and take the small group 'Spellbound' Tour; this tour is one of the most unhurried glow worm tours in New Zealand. Time (up to 20 minutes is needed) is allowed for your eyes to adjust to darkness, then raft on an underground stream and be amazed at the effect of thousands of softly shining glow worms.

Followed by a walk along a gorge path which will bring you to the Cave of the Spirit. Te Ana o Te Atua is quiet and contemplative, soft light reveals a time vault preserving evidence of past explorers, extinct animals, and abandoned stream passages. This is a really memorable cave experience.

Overnight at the Hobbit Motel at Woodlyn Park; a worlds first built alongside the now well established Train Carriage and Aeroplane Motels. A unique experience and don't forget to, the Hobbits add yet another dimension to this unique complex.



## Day 4

### Discover the Geothermal Wonderland of Rotorua

#### ACRONOME LEISURE PARK

#### MAORI EVENING

#### ACCOMMODATION

Novotel Lakeside  
King Suite

#### MEALS

Full Breakfast, Maori  
Hangi Dinner

Rotorua, the heartland of New Zealand is the host to some of the world's most incredible earth forces. Surrounded by the unmistakable smell of bubbling sulphuric geysers, clouds of steam magically appear around the city giving it an incredible 'other worldly' feel.

Stop and visit The Agrodome; a 160 hectare working sheep and cattle farm combined with an adventure theme park. It gives you real hands on experience of farming with sheep, goats, cattle, deer and baby lambs. If you want some adventure, try the Zorb; this involves rolling up to 30 kilometres per hour downhill inside a huge inflated ball. You have about 700 mm of air between yourself and the ground, that's about 2 feet... It's a blast!

Overnight at Novotel Lakeside Hotel; witness the lifting of the Hangi (Maori food) and sample the traditionally steamed cooked food prepared in the Hotel's Hangi pit, along with experiencing Maori culture with the Matariki Cultural show.



## Day 5

### Gondola Ride and Luge - Rotorua

#### GONDOLA RIDE & LUGE

#### POLYNESIAN THERMAL SPA

#### ACCOMMODATION

Novotel Lakeside  
King Suite

#### MEALS

Full Breakfast

Explore and enjoy the panoramic views of Rotorua from Skyline, reached by gondola. Head down the mountain by luge; it is a fun filled gravity ride on a 3 wheel cart.

The unique braking and steering system provides the rider full control, cruise down the concrete sealed tracks that wind down through the redwood trees. Riders return to the top of the luge on a specially designed chairlift.

Spend the afternoon in the Polynesian Thermal Spa, situated five minutes walk from Rotorua's CBD and overlooks Sulphur Bay on Lake Rotorua. This spa is voted as one of the top ten spas in the world (Medical and Thermal Spas) by Condé Nast Traveller. There are thirty-five hot mineral pools including a family spa, private pools and deluxe bathing in the Lake Spa.



## Day 6

### South Island, Kaikoura and Whales

#### FLIGHT TO BLENHEIM

#### WHALE WATCHING CRUISE

#### ACCOMMODATION

Hapuku Lodge Tree Houses  
Family Tree House

#### MEALS

Full Breakfast

Take a morning flight to Blenheim; in the Marlborough region in the heart of this premier wine making district. Enjoy lunch at a vineyard café before driving approx 2 hours to Kaikoura. Few places in the world can boast of such natural wonders as those offered by land and sea in Kaikoura.

Experience an afternoon Whale Watching Cruise; here in this marine playground is the mighty Sperm Whale. These resident bachelors dive to immense depths in search of Giant Squid, so accessible to Sperm whales but still elusive to mankind. You will see unique seabirds to cetaceans (whales and dolphins), seals, or even Orca.

Sleep in a Tree House under the canopy of Hapuku Lodge's native manuka grove. Rising over 9 metres above the ground, the Tree Houses enjoy views of the Pacific coastline and Kaikoura Seaward Mountain ranges. This unique accommodation experience is matched with the luxury of custom crafted beds, spa bath, rain-fountain showers and heated floors.



## Day 7

### Hanmer Springs Alpine Thermal Resort

#### HANMER SPRINGS

#### DRIVE TO CHRISTCHURCH

#### ACCOMMODATION

Hotel So  
Family Room

#### MEALS

Full Breakfast

Drive south and enjoy a day exploring Hanmer Springs; located in an active thermal region, Hanmer Springs is famous for its Natural hot springs.

Whether you want to relax - walk through quiet forest or soak in natural hot pools, mountain bike or horse trek there is something here for everyone.

Then continue south to Christchurch and overnight in Hotel So; an innovative new Christchurch hotel where each room is architecturally designed to provide a premium level of comfort with fresh funky colour and outstanding features.

Located a few minutes walk to Cathedral Square, Christchurch Art Gallery and many of Christchurch's unique and interesting attractions.



## Day 8

### International Antarctic Centre - Christchurch

#### INTERNATIONAL ANTARCTIC CENTRE

#### PUNTING ON RIVER AVON

#### ACCOMMODATION

Hotel So  
Family Room

#### MEALS

Full Breakfast

Today enjoy a personally guided 1.5 hour adventure with a real Antarctic pioneer.

Visit Antarctic Attraction; a recreation of the environment of Antarctica, Hagglund Ride - the Antarctic all-terrain amphibian vehicle! Buckle up and experience travelling across wild Antarctic and visit the Little Blue Penguin Encounter – this is the smallest of all penguins at just 40 cms tall.

Spend your afternoon exploring the city and what better way than by Punting on the River Avon. Sit back and relax in a custom built beautifully upholstered punt as your boatman guides you past the sights.

Then dine in the city; perhaps Lone Star, a great family restaurant where the BBQ ribs are to die for!



## Day 9

### Akaroa “The Riviera of Canterbury”

#### DRIVE TO AKAROA

#### SWIM WITH THE HECTOR DOLPHIN

#### ACCOMMODATION

Akaroa Cottages  
Sea View 2 Bedroom Cottage

#### MEALS

Full Breakfast

Drive approx 90 minutes to Akaroa, a picturesque harbour with many smaller bays indenting this spectacular coastline. In 1840, French settlers arrived at Akaroa. To this day, Akaroa remains unique as the site of the only attempted settlement by the French in New Zealand. Many streets have French names; this Riviera-style village has some wonderful colonial architecture, creative craft shops and excellent eateries.

To really appreciate the harbour, take a scenic cruise and watch a rich variety of marine life including the unique and playful Hector's Dolphin and the rare Little Blue Penguin. This is the only place in the world that you can get so close to these mammals. Whilst on the water be sure to take in the seascape which is dominated by towering volcanic cliffs

teeming with marine birdlife. A fabulous experience!

Overnight at Akaroa Cottages; nestled in New Zealand native bush these cottages offer stunning panoramic views of the harbour and sea.



## Day 10

### Lake Tekapo - An Untouched World

#### LAKE TEKAPO ALPINE SPRINGS & SPA

#### STARGAZING TOUR

#### ACCOMMODATION

Alpine Vista B&B  
King Room

#### MEALS

Full Breakfast, Pre-Dinner  
Drinks

Heading south, drive on Highway 1 to Lake Tekapo; a beautiful turquoise highland lake surrounded by a vast basin of golden tussock and the spectacular Southern Alps.

Spend the afternoon soaking in New Zealand's only high altitude glacial water spa. This facility offers three open air hot pools, private hot tubs, sauna, steam room and plunge pool. There is also the European-styled Day Spa which offers therapeutic massage and mud wraps, an Alpine Springs Café and ice skating, curling, tubing or tobogganing at the Winter Park.

Check into Alpine Bed & Breakfast, it overlooks the Lake and is within easy walking distance to the town before heading to Mount John Observatory for a Stargazing Tour; it is regarded as the best place for astronomy research and stargazing in New Zealand and is the southern most observatory on the earth so you can observe amazing sites such as our own Milky Way Galaxy, the Southern Cross, and Alpha-Centauri. You may also see star clusters like the beautiful Jewel Box, awe inspiring planets and immense clouds of gas and dust.



## Day 11

### Aoraki - Mount Cook National Park

#### GUIDED HALF DAY CITY TOUR

#### NOCTURNAL TOUR AT ZEALANDIA

#### ACCOMMODATION

The Ohtel Suite

#### MEALS

Full Breakfast

Leaving Lake Tekapo, drive for approx 1.15hrs to Mt Cook; its Maori name, 'Aoraki' which means 'cloud piercer' and at 12,016ft (3,755m) it towers above the surrounding snow-covered peaks in the park.

Take a unique guided experience by bus to the beautiful Tasman Valley followed by a 1/2hr gentle alpine walk. Board our MAC boat, and explore the Tasman Glacier Terminal Lake, where you will discover the ever-changing ice face of the Glacier and icebergs. Knowledgeable guides enhance your experience with their expertise and passion for this amazing alpine environment. (October to May Only)

When ready drive for 2.5 hours to Wanaka. Located on the southern shores of Lake Wanaka, the township is embraced by the spectacular Southern Alps. The crystal-clear waters of the lake, New Zealand's fourth largest lake, reflect the snow-capped peaks of Mount Aspiring National Park. Overnight at Oakridge Resort; soak in the heated pools exquisitely landscaped in rock and alpine tussock and dine in The Hub Restaurant - a true dining experience, infusing local ingredients with international flair amidst the glow of open fires and alpine surrounds.



## Day 12

### Puzzling World Wanaka & Queenstown

#### PUZZLING WORLD

#### ACCOMMODATION

Heritage Hotel  
2 Bedroom Suite Lake View

#### MEALS

Full Breakfast

Enjoy a leisurely breakfast before checking out Puzzling World, one of the quirkiest theme parks. Check out the room with the sloping floor that makes you look like a giant from one end and a dwarf from the other! Best of all is the giant maze, where even grown-ups can get lost for hours.

Heading to the Adventure Capital, be sure to stop and soak up the atmosphere in Arrowtown. This town is a combination of striking seasonal changes, historic buildings and quiet charm.

Onto Queenstown; there is excellent shopping, restaurants and cafes and in many adrenalin-seeking ways, it encapsulates much of what New Zealand is about.

Stay at the Heritage Queenstown Hotel; enjoy the facilities and the amazing view of the Remarkables mountain range from your villa.



## Day 13

### Family Adventure Rafting

#### FAMILY ADVENTURE RAFTING

ACCOMMODATION  
Heritage Hotel  
2 Bedroom Suite Lake View

MEALS  
Full Breakfast

After breakfast, begin this fabulous trip with the drive into the famous Skippers Canyon; this is quite possibly the most spectacular drive in New Zealand.

Continue following the old gold mining trail into the backcountry. Take to the water at “The Ford of Bruinen”, made famous by the Lord of the Rings and head down the grade 2 rapids in either guided rafts or inflatable kayaks. See gold mining relics and sheer canyon walls as we navigate the Shotover River, with photo stops, rapid swims and rock jumps.

Spend the rest of the day exploring Queenstown... your activity options are endless so go crazy!



## Day 14

### E Noho Ra (Good Bye) Fly Home or Extend your Trip!

#### FLIGHT CONNECTION FROM QUEENSTOWN AIRPORT

MEALS  
Full Breakfast

Depart Queenstown to connect with your international flight or extend your stay and experience some of the South Islands highlights.

With so many more activities to experience you could extend your trip. Just let us know what you want to do - we are here ready to help

Do not hesitate to contact us for more information on extending your holidays.

- Absolute New Zealand Arrangements End -

*Absolute*  
NEW ZEALAND