

Diving Expedition Tour



15 Days - North and South Islands

Absolute
NEW ZEALAND

Outline Itinerary

Day 1

Arrive Auckland, and drive to Tutukaka
Accommodation: Oceans Tutukaka

Day 2

Dive Poor Knights Marine Reserve
Accommodation: Oceans Tutukaka

Day 3

Dive Twin Wrecks:HMNZS Tui & HMNZS Waikato
Drive to the Bay of Islands
Accommodation: Paihia Beach Resort & Spa

Day 4

Dive the Rainbow Warrior - The Greenpeace Ship
Accommodation: Paihia Beach Resort & Spa

Day 5

Drive to the Coromandel Peninsula
Accommodation: Colleith House

Day 6

Dive the Aldermen Islands
Drive to Tauranga
Accommodation: The Sebel Trinity Wharf

Day 7

Dive an Active Volcano: White Island
Accommodation: White Island Rendezvous

Day 8

Drive to Rotorua
Te Puia's Evening Cultural Experience
Accommodation: Peppers on the Point

Day 9

Fly to Blenheim
Half Day Marlborough Wine Tour
Accommodation: Hotel d'Urville

Day 10

Dive the Mikhael Lermontov - the "Red Giant"
Accommodation: Hotel d'Urville

Day 11

Dive Riwaka Caverns
Punakaiki - Pancakes Rocks and Blowholes
Accommodation: Kapitea Ridge

Day 12

Fox Glacier Heli-Hike
Tussock in the Hills 4WD Tour in Wanaka
Accommodation: Aoturoa Luxury Villa

Day 13

Drive to Queenstown
Dart Wilderness Jet Boating Adventure
Drive to Te Anau and the Glowworms Caves Tour
Accommodation: Fiordland Lodge

Day 14

Dive the "Last Frontier" in Milford Sound
Accommodation: Fiordland Lodge

Day 15

Homeward Bound or Extend your Trip

Featuring

Oceans Tutukaka - Karikari Peninsula

Perched on the edge of the renowned Tutukaka Marina, Oceans is part of a truly European inspired resort destination, with a myriad of water-based activities on your doorstep, fabulous beaches and a lush subtropical climate you will feel as though you have escaped to paradise.

Each of Oceans Hotel's 28 rooms features a super-king bed, an ensuite bathroom with bath and shower, Sky TV, Internet access and tea and coffee making facilities.

The restaurant, 'Knights' is also available offering exceptional service and fresh delicious meals with an emphasis on seafood.



Paihia Beach Resort & Spa - Bay of Islands

Located in a superb beach position overlooking the Bay of Islands, The Paihia Beach Resort & Spa offers stunning ocean views from every balcony and patio.

All of the accommodation are spacious and stylishly furnished, featuring floor to ceiling panoramic ocean views, private balconies, remote controlled air-conditioning, DVD players, Hi Fi systems and 6ft spa baths.

The award winning day spa 'La Spa Naturale' is situated in the resort and offers international standard spa treatments, including water treatments with the Vichy & Fusion showers. Other facilities include a 20 metre heated saltwater pool, a large Jacuzzi, private steam and sauna rooms. The poolside, sea view restaurant, "Pure Tastes" is headed up by executive chef, Paul Jobin, who has won numerous culinary competitions and food awards.



Featuring

Colleith Lodge - Coromandel Peninsula

Colleith Lodge is boutique luxury five star property in a unique breathtaking location situated on the east Coast of the Coromandel Peninsula.

Set on 1.5 acres amid native bush, the lodge was built in tune with the natural environment for your relaxation, privacy and comfort.

The spectacular panoramic views encompass Tairua Estuary, Pauanui, Slipper Island and the Pacific Ocean and can be viewed from all rooms. Colleith

Lodge offers a spa and swimming pool for your enjoyment. Golf Courses, bush walks, Hot Water Beach and Cathedral Cove are all nearby.

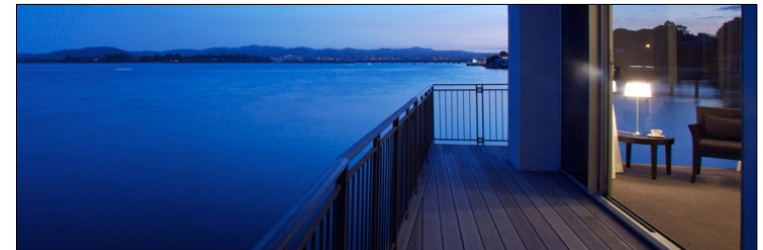


The Sebel Trinity Wharf - Tauranga

The Sebel Trinity Wharf Tauranga is brilliantly positioned in the sunny Bay of Plenty offering four star accommodation and magnificent views of Tauranga Harbour.

This stylish over-water hotel comprises 120 stylish and well-appointed guestrooms.

All premium water view and harbour view guestrooms feature individual balconies or direct access to the pool. Halo Lounge & Dining offers impeccable service and a chic yet relaxed ambience.



Featuring

White Island Rendezvous - White Island

Situated opposite the picturesque Whakatane Wharf, White Island Rendezvous provides quality accommodation for the pleasure traveller with a variety of quality accommodation choices to suit the business or pleasure traveller.

The options are here for you - whether you prefer a studio with spa bath or shower, an apartment with full kitchen facilities or the luxury of a super king-size bed in our boutique kauri villa.

Wake up to a hearty cooked breakfast delivered to your room, or enjoy the atmosphere of our on-site coffee house.



Peppers On The Point - Rotorua

Surrounded by the sparkling waters of Lake Rotorua, Peppers on the Point is an intimate luxury retreat featuring spectacular views to the historic Mokoia Island.

This stunning retreat offers the perfect base for experiencing New Zealand's rich culture or you can simply relax and enjoy the tranquillity of this stunning location from the comfort of our inviting entertainment rooms with open fireplaces.

Just five minutes from the heart of Rotorua City this retreat includes nine spacious, luxuriously furnished suites with most featuring stunning lake views. Without leaving the lodge surrounds you can indulge in a heavenly massage at our onsite spa, try fly fishing from the private beach, enjoy water sports and tennis or even spend your day boating. The dining room is also renowned for serving fabulous New Zealand cuisine accompanied by the finest New Zealand and international wines; it is an experience not to be missed.



Featuring

Hotel d'Urville - Blenheim

This is the perfect place to relax after a day spent enjoying Marlborough's many attractions.

Hotel d'Urville is a small hotel located in the heart of the central business district with eleven, well-appointed rooms, an elegant bar, and modern restaurant.

The building - the Old Public Trust Building - is a Blenheim landmark. It was built in the art deco style in the 1920s and features a magnificent columned façade, grand staircase and high ceilings.



Kapitea Ridge - West Coast

Kapitea Ridge is an intimate and stylish, luxury boutique hotel on the rugged West Coast of the South Island of New Zealand.

The lodge is located between Hokitika and Greymouth, and lies amongst 8 hectares of prime coastal land with panoramic views over the wild beaches and indigenous rainforest.

The unique design and the special location offer tranquil relaxation amidst nature. Accommodation is stylish and private, with attention to comfort and detail.



Featuring

Aoturoa Luxury Villa - Wanaka

Situated in New Zealand's beautiful Southern Lakes region between Queenstown and Wanaka you find Aoturoa Luxury Villa, a 5 star boutique lodge offering quiet seclusion and understated luxury accommodation. This exclusive Wanaka accommodation gives visitors to New Zealand a stunning high country experience.

Aoturoa, (which means "World of Light") provides luxury boutique lodge accommodation. This unique villa is tucked away on the Clutha River terrace at the end of a one kilometre private drive. The river is a two minute stroll from the lodge with mountain views in all directions and barely a building in sight. You could be hundreds of kilometres away from civilisation yet a short 15 minute drive from the accommodation finds Wanaka Township with its boutiques, restaurants, art galleries, & magnificent sightseeing.

Enjoy the Aoturoa Lodge & Pisa Range Estate Food and Wine Experience; a fabulous dinner with the wine maker.



Fiordland Lodge - Te Anau

The open architecture of Fiordland Lodge reflects the vastness of the Fiordland National Park. Echoes of the forest are found in the striking natural timber construction; high ceilings, full trunk pillars and a massive riverstone fireplace provide a warm spacious environment.

On forty acres of land, Fiordland Lodge is set on a superb site with commanding views out across Lake Te Anau. This is a rural setting with rolling grass lands surrounding the Lodge, Lake Te Anau being a mere ten minute walk away.

Across the lake to the west lie the mountains of Fiordland National Park, an area of over three million acres of untouched wilderness and part of the much larger South West New Zealand World Heritage Area. The ten luxury guest rooms - one an executive suite with separate lounge area for private entertaining are simply luxurious.



Diving Expedition Itinerary

Day 1

Welcome to the Jewel in the Pacific

DRIVE TO TUTUKAKA

ACCOMMODATION
Oceans Tutukaka
Double Room

Arrive in Auckland “The City of Sails”, a title gained from the view of yachts seen against the cityscape. Here everyone lives within half an hour of beautiful beaches, hiking trails and a dozen enchanted holiday islands. Cleared customs, collect your rental vehicle and hit the road.

Drive a couple of hours north to your destination, Tutukaka; gateway to the Poor Knights Islands. This tranquil stretch of coastline is often described as the Paradise Coast, and for good reason, the coastline is scenically breathtaking, rugged and rocky, punctuated with white sand surf beaches with an array of activities to suit all needs. This is one of the country's best kept secrets.

Explore the area, enjoy table d’hote fine evening dining or alfresco before relaxing at Oceans Tutukaka, perched on the edge of the renowned Tutukaka Marina.



Day 2

Dive the Poor Knights Marine Reserve

DIVE THE POOR KNIGHTS MARINE RESERVE

ACCOMMODATION
Oceans Tutukaka
Double Room

MEALS
Full Breakfast

Need we say more - The Poor Knights Marine Reserve, named by Jacques-Yves Cousteau as one of the Top 10 Dive Sites in the world.

Over 125 species of fish share this complex marine environment, along with soft corals, sponges, vibrant anemones, sting rays, gorgonian fans and vast kelp forests.

Beneath the waters you'll also find the world's largest sea cave, Rikoriko, reputed to have hidden a marauding Japanese submarine during World War II. The warm currents here originate in the Coral Sea, so the water temperature is higher and visibility greater than that of nearby coastal waters.

Back on dry land, we suggest you to spend the evening dining at Snapper Rock Restaurant at the marina; the seafood chowder is to die for!



Day 3

Dive the Twin Wrecks

DIVE THE TWIN WRECKS AND DRIVE TO PAIHIA

ACCOMMODATION
Paihia Beach Resort & Spa
Superior Suite

MEALS
Full Breakfast

ACTIVITY OPTION
Spa Treatment, at the
Resort

Strategically sunk to make artificial reefs, the former research ship HMNZS Tui and ex-combat frigate HMNZS Waikato the two former Navy ships where purposely prepared and maintained for easy access penetration diving.

Penetrate the wrecks through purpose cut access and exit point, and explore control rooms, bridges, crew living quarters and engine rooms via established routes.

Watch the snapper swarm over nipping at the anemones, sponges and crabs scuttle away into cracks while Kingfish cruise in like approaching aircraft making low passes. You need to have at least 20 logged dives to dive the Waikato and must be an advanced diver to dive the Tui.

When ready drive north to Bay of Islands, check into the Paihia Beach Resort & Spa, located in a superb beach position and offering stunning ocean views. Enjoy a treatment at 'La Spa Naturale', the award winning day spa or take a dip in the 20 metre heated saltwater pool or relax in the Jacuzzi, private steam and sauna rooms. Dine at the sea view restaurant, "Pure Tastes" where the chef has won numerous culinary competitions and food awards. Simply divine!



Day 4

Dive the Rainbow Warrior - The Greenpeace Ship

DIVE THE RAINBOW WARRIOR

ACCOMMODATION
Paihia Beach Resort & Spa
Superior Suite

MEALS
Full Breakfast

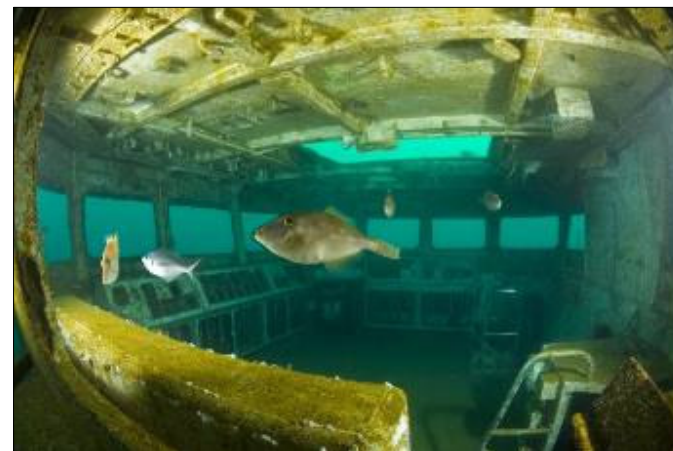
ACTIVITY OPTION
Spa Treatment, at the
Resort

After making passage to the Cavalli Islands explore the wreck of the controversial Greenpeace flagship – the Rainbow Warrior.

Bombed in Auckland Harbour by French Secret Service agents on July 10th 1985, the wreck was relocated off the Cavalli Islands two years later.

This artificial reef has matured into an ever-growing host to marine life and is an excellent shallow water wreck dive suitable for certified open water divers.

The wreck is splendour of colour with jewel coloured anemones clinging to the rails in hues of purple, yellow and blue and is home to schools of Golden Snapper, Kingfish and John Dory making this one of the world's most famous wrecks.



Day 5

The Coromandel - Beautiful Beaches & Native Bush

DRIVE TO THE COROMANDEL PENINSULA

CATHEDRAL COVE WALK & HOT WATER BEACH

ACCOMMODATION

Colleith House
Super King Room

MEALS

Full Breakfast, Pre-Dinner
Drinks

Drive south, passing through Auckland across to the Coromandel Peninsula.

This impressive heavily forested mountain range runs right up the middle of this peninsula - bordered on each side by kilometres of spectacular coastline.

Take the Cathedral Cove Walk from Hahei, down through farmland and native bush to the hidden coves along this stunning volcanic coastline. The interesting rock formations have been carved away over many years.

Next stop is Hot Water Beach, dig a hole in the sand when the tide is low and allow the geothermal hot springs work their limb-soothing magic while the cool waves of the Pacific Ocean invigorate you.

Overnight at Colleith House in Tairua; This boutique property is in a unique breathtaking location set on 1.5 acres amid native bush with spectacular panoramic views encompassing Tairua Estuary, Pauanui, Slipper Island and the Pacific Ocean.



Day 6

Dive the Aldermen Islands

DRIVE TO TAURANGA AND DIVE THE ALDERMEN ISLANDS

ACCOMMODATION

The Sebel Trinity Wharf
Harbour View Room

MEALS

Full Breakfast

Located 20 kilometres off the coast of Tairua on the Coromandel Peninsula, are a series of dramatic island peaks, remnants of volcanoes rising up off the ocean floor. These are the Aldermen Islands known for fantastic diving and often compared with the Poor Knights.

The diving is spectacular featuring huge drop offs and attracting a great range of fish life, caves, pinnacles starting at 12 metres, and a major feeding station starting 8m below the surface and dropping to 70m.

The marine life is varied, with Spanish lobsters relatively common in this area. The islands are occupied by visiting seals in the winter months, and schools of dolphins and pods of orca are often seen.

When ready drive south along the coast to Tauranga and overnight in a Premium Water View Spa Guestroom at the Sebel Trinity Wharf. This hotel is brilliantly positioned in the sunny Bay of Plenty offering four star accommodation and magnificent views of Tauranga Harbour.



Day 7

Dive an Active Volcano - White Island

DRIVE TO WHAKATANE AND DIVE WHITE ISLAND

ACCOMMODATION

White Island Rendezvous
Deluxe Studio unit with
Spa-Bath

MEALS

Full Breakfast

Early morning drive to Whakatane ready for your day's adventure; Diving an active volcano; White Island.

It has been steaming away for centuries and is truly unique with the bubbling underwater fissures creating an underwater Jacuzzi.

The warmer currents also mean visibility of generally 20 metres plus, not to forget the abundant varieties of fish life including huge Kingfish, Stingrays, Moray Eels and massive schools of Blue Maomao, along with some of the biggest crayfish.

Diadema urchins are almost unique to White Island and masses of these can be seen on a pinnacle dive known as Diadema Rock.

Overnight at White Island Rendezvous, a comfortable accommodation situated opposite the picturesque Whakatane Wharf and within walking distance of the town centre and many fine restaurants.



Day 8

Explore the Geothermal Wonderland of Rotorua

DRIVE TO ROTORUA

TE PUIA'S EVENING MAORI CULTURAL EXPERIENCE

ACCOMMODATION

Peppers On The Point
Lodge Suite

MEALS

Full Breakfast , Maori
Dinner at Te Puia

Wake to a hearty cooked breakfast delivered to your room or enjoy the atmosphere of the onsite coffee house. Then drive from Whakatane to Rotorua, check into Peppers on the Point and enjoy the view overlooking the sparkling waters of Lake Rotorua.

Spend the day taking in the sights and sounds of Rotorua. Enjoy a spa treatment or soak in one of the deluxe baths at the Lake Spa Retreat at Polynesian Spa; voted as one of the top ten spas in the world (Medical and Thermal Spas) by Condé Nast Traveller. Or whitewater raft the mighty Kaituna River or perhaps spend 4.5 hours walking past gushing geysers, boiling mud pools and mineral terraces. The options are endless.

An authentic evening cultural experience awaits you at Te Puia. Enjoy a feast of food, culture and friendship. Held at Te-Heketanga-a-Rangi (The Heavenly Origins); the space comprises of twelve monumental carvings reaching skywards, each one representing a Māori diety. Hear the stories of the past and see how these traditions live on today.



Day 9

Marlborough - Wine and Gourmet Food

FLY TO BLENHEIM

**HALF DAY MARLBOROUGH
TOUR**

ACCOMMODATION
Hotel d'Urville
Boutique Room

MEALS
Full Breakfast

Take a morning flight to Blenheim, the largest town in the Marlborough region, in the heart of this premier wine making district making it a very popular visitor destination.

The Marlborough region is New Zealand's largest producer of wine and is particularly famous for its Sauvignon Blanc. Of the numerous vineyards in the area, about 30 are open to visitors, offering tastings and tours of the property. The region boasts one of the most stable climates in the country and experiences and above average sunshine record.

Spend the afternoon experiencing the magic of Marlborough with a visit to some world famous wineries including Cloudy Bay. Sample the wines, the olive oils, the divine hand made chocolates of Makana and the gourmet foods that have put this region on the map as the gourmet province.

Settle into Hotel d'Urville and enjoy a relaxing evening. This is the perfect place to relax after a day spent enjoying Marlborough's many attractions.



Day 10

Dive the Mikhael Lermontov - The Red Giant

**DIVE THE MIKHAEL
LERMONTOV, THE "RED
GIANT"**

ACCOMMODATION
Hotel d'Urville
Boutique Room

MEALS
Full Breakfast

Spend the day exploring the leviathan known as the 'Red Giant'. On 16 February 1986 the 170 metres long Mikhael Lermontov, Russia's then most luxurious cruise liner, became one of the largest and most accessible diving wrecks of the modern era when she sunk in the Marlborough Sounds.

At her shallowest point she sits at 12 metres (38 ft) at an angle of 10 degrees bow up.

Being a complete wreck, the Lermontov is a treasure trove of artefacts just waiting to be discovered.

Everything from bottles of Russian vodka to a fully stocked library awaits you below deck. You may even come across a Russian doll!



Day 11

Dive Riwaka Caverns, Explore Pancake Rocks & Blowholes

DIVE RIWAKA CAVERNS

DRIVE TO THE WEST COAST AND STOP AT PUNAKAIKI

ACCOMMODATION

Kapitea Ridge
Ocean View Lodge Room

MEALS

Full Breakfast

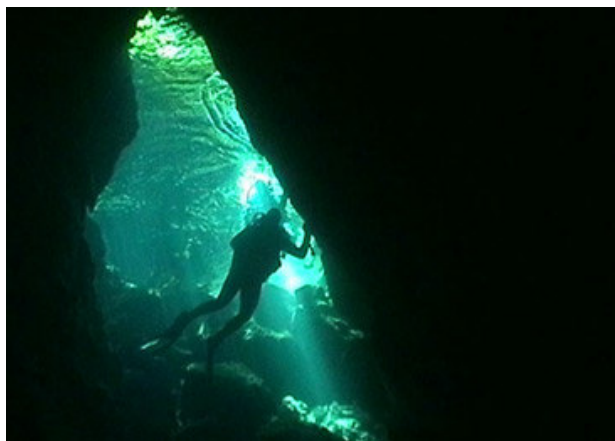
Morning drive to the Riwaka Caverns; here you will experience a very interesting yet relatively easy freshwater cave dive.

After a short bush walk that takes you to the top of a basin enter the cave through a 3 metres sump. The highlight of the dive is the massive chamber at the end of the second sump. Remove your scuba equipment and explore the stalactite and stalagmite formations. The sheer size of this chamber is totally unexpected!

Continue on your way to the West Coast to the spectacular Punakaiki. These rocks really are remarkable pieces of natural sculpture, a series of

stratified limestone stacks which, over many thousands of years, have been eroded to give the effect of giant piles of neatly stacked pancakes. Another prominent feature are the blowholes that, at high tide or in heavy weather, regularly throw up columns of dazzling spray high out of the blowholes.

Overnight at the stylish Kapitea Ridge; enjoy a gourmet dinner then relax as the sun goes down around the outdoor stone fire, rugs are provided for that time when the warmth of the sun has disappeared.



Day 12

Fox Glacier Heli Hike & Tussock in the Hills

HELI-HIKE FOX GLACIER

DRIVE TO WANAKA

TUSSOCK IN THE HILLS 4WD TOUR -

ACCOMMODATION

Aoturoa Luxury Villa
Double Room

MEALS

Full Breakfast

Drive to Fox Glacier and board a helicopter for your exciting Heli-hike; by flying into the glacier you are able to access and explore a part of the glacier that is otherwise very difficult to get to. View awe-inspiring pillars of the lower icefall then circle the marvellous upper icefall and the Victoria Falls before landing. Your remote landing site on the ice is an exceptionally beautiful part of the glacier. Outfitted with instep crampons you follow the ice steps, cut by the guides and explore the beautiful formations and ice caves which are seen only here. This is a true voyage of exploration.

When finished continue your journey along the coast, stopping at the scenic Lake Matheson before heading to Wanaka. Join a small 4WD Tour and travel to an amazing viewpoint high above Lake Wanaka. Open a

bottle of Central Otago Pinot, sit back, sample a tasty cheese platter and take in the ever-changing landscape as the setting sun casts a myriad of shadows and colour changes over the Southern Alps and Lake Wanaka far below. The beauty of the Central Otago hills at sunset is truly spectacular.

Spend the evening at Aoturoa Luxury Villa. Enjoy dinner with the winemaker, the Aoturoa Lodge & Pisa Range Estate food and wine experience.



Day 13

Dart Wilderness Jet Boating Adventure

DART WILDERNESS JET BOATING ADVENTURE

TE ANAU GLOW WORM CAVES

ACCOMMODATION Fiordland Lodge Exclusive Suite

MEALS Full Breakfast, Dinner

Today you be taken on a 1.5 hour Wilderness Safari through the Dart Rivers ever-changing braided river system, be awed by the breathtaking snow-capped mountains, ancient native forest, waterfalls and glacial valleys frozen in time.

Walk through the ancient beech forest at Paradise before travelling by 4WD coach along a scenic back-road route stopping to view scenery that has formed the epic backdrop for many international films, including 'The Lord of the Rings'.

Continue on your journey passing by Queenstown to explore the mysterious underground world of the Te Anau Glow Worm Caves. Your adventure begins with a scenic cruise across Lake Te Anau, once there explore the caves by path and small boat and

observe how the rushing water sculpts the rock formations, before gliding through silent darkness to the glow-worm grotto. The delicate incandescence of thousands of tiny glow-worms is a magical sight.

Check into Fiordland Lodge and enjoy the superb cuisine.



Day 14

Diving Fiordland - A Look into the Jurassic

DIVE FIORDLAND - MILFORD SOUND

ACCOMMODATION Fiordland Lodge Exclusive Suite

MEALS Full Breakfast, Dinner

Enjoy a gourmet breakfast before heading off to 'Dive the Last Frontier' - as called by Jacques-Yves Cousteau.

Today's diving will amaze and inspire. Fiordland's unique marine environment results from a combination of dramatic mountains and intense rainfall. Massive volumes of water flow into the fiords, causing a freshwater layer to overlay the seawater, thereby creating an environment where deepwater species can live at unusually shallow depths. This means that scuba divers like you can see rare black and red corals, spiny sea-dragons and other deepwater life at only 10-15m.

When you are back on dry land spend your last evening enjoying a relaxing drink while taking in the commanding views out across Lake Te Anau.



Day 15

E Noho Ra (Good Bye) Homeward Bound or Extend your Trip!

**DRIVE TO QUEENSTOWN
AIRPORT FOR YOUR FLIGHT
CONNECTION, OR EXTEND
YOUR TRIP**

MEALS
Full Breakfast

Depart Te Anau to connect with your international flight or extend your stay and experience some other of the South Islands highlights.

If you are departing from New Zealand it's a 2 hours 25 minutes drive to Queenstown International Airport.

Those that wish to continue their journey can request a customized tour from us - there are plenty of possibilities we can put together for you!

Perhaps wanting to walk the Milford or Routeburn Tracks or continue heading south to the idyllic Stewart Island? Just ask, after all it is your holiday...

- Absolute New Zealand Arrangements End -

