

NEW ZEALAND  
**GEOGRAPHIC**  
EXPEDITIONS

**ISLAND ESCAPE**  
CRUISES

# SEASONS OF ISLAND ESCAPE



**LUXURY CRUISES AND CHARTERS**  
**SHELTERED WATERS, BIG SHIP COMFORT AND EXCEPTIONAL INTIMACY.**



NEW ZEALAND  
**GEOGRAPHIC**  
EXPEDITIONS

**ISLAND ESCAPE**  
CRUISES

---

New Zealand Geographic and Island Escape Cruises have formed an alliance to offer luxury expeditions within New Zealand and Vanuatu. Our shared passion for adventure, discovery and conservation has inspired a series of extraordinary small ship voyages to some of the most remote and fascinating places in New Zealand and the South Seas.

---

The 'Island Passage' is our beautifully-appointed small ship. Weighing in at almost 500 tonnes, she's equipped to travel to inaccessible areas while delivering the highest level of passenger comfort. On board you'll find 10 spacious ensuite cabins, a large dining room and saloon lounge, a library and generous outdoor living spaces. In the galley, our chef works with the freshest local ingredients and delicacies to create memorable meals that reflect the day's adventures.

For entertainment and exploration, Island Passage carries purpose-built landing craft, three large tenders, sea kayaks, a five-seater helicopter and snorkelling equipment. Never a dull moment, although lazing in a deckchair is always an

acceptable option. During each journey, our eight-person crew are on hand to share their knowledge of the ocean and local landscapes. On selected trips, the learning experience will be enhanced by a New Zealand Geographic scientist, historian, photographer or explorer. The NZ Department of Conservation has granted Island Passage permission to operate in DOC sites within New Zealand.

The alliance between Island Escape and New Zealand Geographic is assisting research and exploration projects around the service region. Together we support the New Zealand Geographic Trust with funding for research and conservation in the areas we visit. *Welcome aboard.*



# Bay of Islands – January to February



*In a 2006 study, the Bay of Islands was found to have the second bluest sky in the world, after Rio de Janeiro. Dumé, Belle (2 August 2006)*



## Opua to Assassination Cove

Island Passage departs the port town of Opua at 3pm. We'll cruise up the Veronica Channel, past the historic settlement of Russell and around Tapeka Point before entering the maritime paradise known as the Bay of Islands. Our first anchorage is Te Hue Bay, which also goes by the name of Assassination Cove.

## Assassination Cove

French explorer Marion du Fresne and 26 of his crew were killed and eaten in this bay – an act of utu (revenge) by the local tribe. The Frenchmen had made the mistake of fishing in tapu waters, even though they had been warned to stay away. You can relax - the tapu as long-since been lifted from Te Hue Bay.



## Assassination Cove to Cooks Cove

After a sumptuous breakfast on deck, make yourself comfortable for the passage to Motuarohia Island, where we'll anchor in Cooks Cove. In the Maori language, Motuarohia means 'island to be desired'. You'll quickly see why. From here, we can guide your explorations of this fabulous island and nearby Urupukapuka.

## Urupukapuka Island

The largest island in the bay, Urupukapuka has eight significant terraced pa (fortified village) sites, which you can discover on an archaeological walk that's interpreted with signs. Located mostly on headlands, the pa allowed Maori to see enemies approaching by sea.





# Deep Water Cove to Cavalli Islands

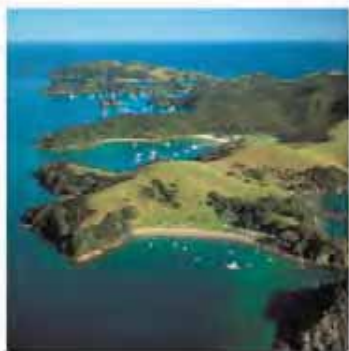


## Cooks Cove to Deep Water Cove

This morning we'll cruise through the bay, possibly with dolphins for company, to Cape Brett Peninsula (Rakaumangamanga). About mid-way up the peninsula is Deep Water Cove, a fantastically beautiful deep-water anchorage. From here our tenders can take you on a fishing expedition or to the Hole-in-the-Rock (Piercy Island).

## Deep Water Cove

Framed by steep, forested hillsides, Deep Water Cove was the site of Zane Grey's first angling base and an early whaling station. It's now a nature reserve, complete with idyllic waterfall. Beneath the waters of the cove lies the HMNZS Canterbury, a Leander-class frigate built in Scotland for the Royal New Zealand Navy. The ship was scuttled in 2007 to become a dive attraction.



## Deep Water Cove to Cavalli Islands

After breakfast, our three-night cruise passengers will depart by helicopter for Paihia. Not long later, the helicopter will return to the ship with our two-night cruise passengers. Then we'll up anchor and set course for the sub-tropical Cavalli Islands.

## Cavalli Islands

The Cavalli group consists of the island of Motukawanui and a number of smaller islets. Motukawanui has around 70 archaeological sites, including 14 pa and 36 pit and terrace complexes. It's cared for by the Department of Conservation, who have been replanting native forest and introducing rare birds – the North Island brown kiwi is doing well here. The walking track on the island takes around two hours to complete. It follows the ridge tops, delivering outstanding views of Mahinepua Peninsula and Matauri Bay.



## Cavalli Islands to Marsden Cross

Rangihoua Bay on the mainland is our next destination. At Oihi in the bay, the Marsden Cross stands lonely above the sandy beach. It commemorates the site of New Zealand's first European settlement, as well as Samuel Marsden's first sermon on Christmas Day in 1814. From this anchorage, our tenders can take you to see Kerikeri's historic Stone Store and Mission House.



## Marsden Cross to Opuia

On the final day of our Bay of Islands expedition, we'll cruise past the Black Rocks on the way back to Opuia. The remains of a basalt lava flow, these rocks are around 1.2 million years old. Expect to disembark at Opuia Wharf around 12.30.







# Island Passage – your relaxing home on the water

The 'Island Passage' is perfect for a leisurely break from a hectic lifestyle. We only have accommodation onboard for 20 passengers. The ten spacious cabins, with rich timber panelling and New Zealand Kauri furniture, all fitted with DVD, audio and TV, and are all air-conditioned. Most with doors opening on to the outer deck, each cabin has its own private ensuite.



## Bridge Deck Suites

Offering the best views on the ship, the two Bridge Deck cabins open directly onto the teak bridge deck. Each cabin is individually air-conditioned with SKY TV, DVD/CD, movies on demand, writing desk, easy chair, super king bed and extra-large bathroom.



## Staterooms

On the same level as the saloon, bar and dining room, the Staterooms have large picture windows and doors opening directly onto the promenade deck. Each cabin has individual air-conditioning, TV, DVD/CD, movies, writing desk and either queen or twin single beds.



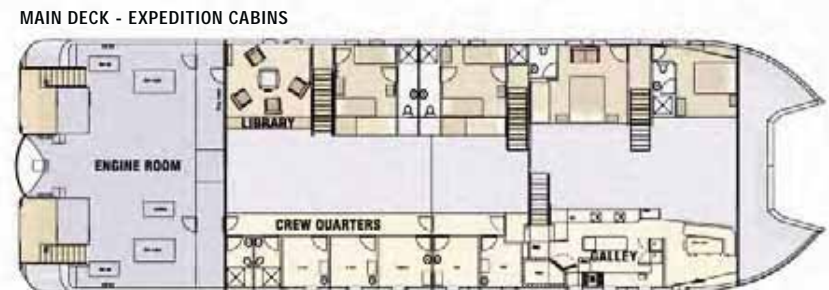
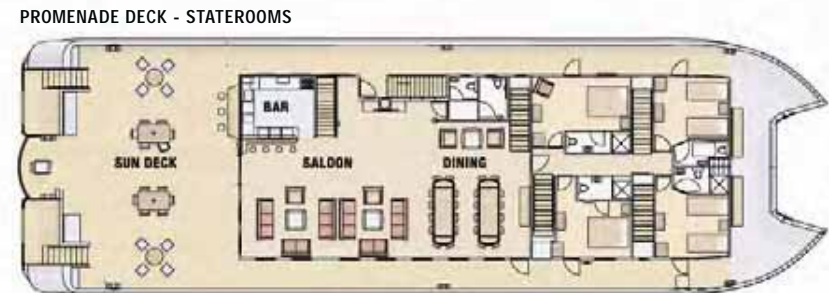
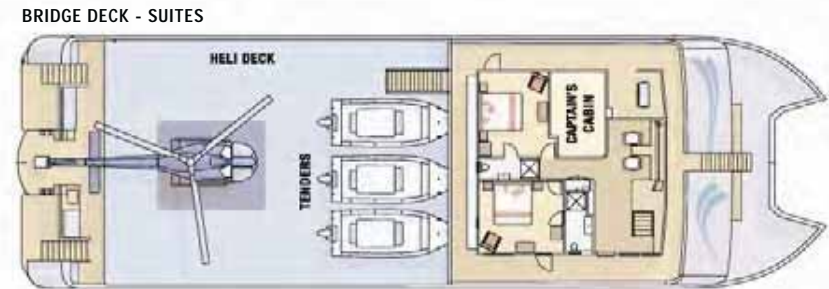
## Expedition Cabins

Located on the main deck, our Expedition cabins give you a choice of a queen-size bed or two singles. Suites with single beds have a pullman berth for a third guest. Individual air conditioning, TV, DVD/CD, movies. Sea view from the portholes.



# Vessel Specifications

The 'Island Passage' operates with a crew of eight and is registered as a New Zealand vessel under NZ Safe Ship Management. She has a tonnage of 496 GRT. The ship carries a selection of landing craft, tenders and kayaks to allow exploring off the ship into bays, estuaries and islands. The helicopter is available for trips beyond the range of our sea craft.



## FACT FILE

### VESSEL SPECIFICATIONS

Length: 42 metres (138 feet)  
 Beam: 12.8 metres (39 feet)  
 Gross weight: 496 tonne  
 Range: 5500 nautical miles  
 Engines: 2 x Kelvin Marine Diesel: 48,000 litres  
 Fresh water: 40,000 litres  
 Desalinator: 5000 litres/day  
 Auto pilot: Cetrek  
 Radar: Northstar x 2

### Onboard equipment

1 x 7-metre landing craft  
 2 x 7-metre sports boats  
 SOLAS rescue boat  
 4.2 metre tender  
 AS355 F1 Squirrel helicopter

Air conditioning: Cruisair  
 Satellite TV: SeaTel 2498SE  
 Home theatre: Bose  
 Televisions: Philips plasma

# Island Passage – onboard hospitality

Relaxation, exceptional food and fine wine are an essential part of your expedition. Fresh air not only clears your mind, it makes you hungry.

Island Passage is equipped with a professional galley and a chef who's dedicated to making every meal magnificent. Local seafood (maybe even some you caught yourself) is often on the menu; you'll also enjoy other delicacies and organic artisan foods produced in the local region.

Breakfast and lunch are usually served on the aft deck, so that you won't miss a single minute of any of the beautiful scenery. In the evening you'll dine in style at one of the 10-seater tables. Conversation is invariably lively and lots of fun.

Our on-board wine cellar is brimming with a selection of award-winning New Zealand wines. You won't need to remember the recipe for your favourite aperitif; our bartender is well-versed in the magic of mixology.







NEW ZEALAND  
**GEOGRAPHIC**  
EXPEDITIONS

[www.expeditions.org.nz](http://www.expeditions.org.nz)

**ISLAND ESCAPE**  
CRUISES

[www.islandescape.co.nz](http://www.islandescape.co.nz)

TRAVEL AGENT